



## GEA ANALYSIS SOFTWARE



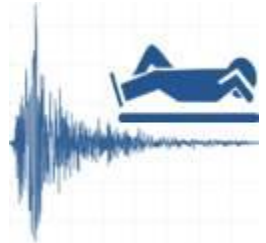
### DATA RECORDING

Thanks to these functionalities, any GEA system could be used as a simple data recorder. Then, the Raw Data in open format can be further analyzed by other software such as Matlab® or Excel. In the multi-Sensor system, using the Hub Sync, data are also suitable to be used for advanced analyses such as modal tests.



### STRUCTURAL DAMAGE

With these options, it is possible to analyze real-time data in conformity with DIN 4150-3 and other relevant international standards. PPV calculation is performed with the FFT method. Advanced Trigger functionalities are available. During the acquisition the software stores global vibration values at user-defined intervals and, in case the threshold level is exceeded, the event time history and the spectra are saved. Data are then compared with the reference curves in real-time.



### HUMAN COMFORT

This option analysis allows acquiring data to evaluate human comfort within buildings. Several international standards are implemented such as DIN 4150-2 and ISO 2631.



### Scheduling

The scheduling option is fundamental in long-term monitoring sessions. With this option it is possible to define system activity (Start and Stop), data storage in daily/hours schedules, alert interval on system status and others. A complete functionality is available, if the system is connected to internet and with the E-Mail alert option.



### E-Mail Alert

Once connected to internet, with this option it is possible to send several information regarding the monitoring activity to user-defined accounts, in particular alerts, when the threshold level is exceeded, system status information and logging measurement data. Check your mail on your PC, Smartphone or tablet to know everything about your monitoring system.